



jordan fishwick

Flat 2 28 Station Road, SK9 3AA
Guide Price £180,000



28 Station Road Handforth SK9 3AA

Guide Price £180,000




This spacious two bedroom ground floor apartment is located within the heart of Handforth town centre and is ideal for either a first-time buyer or buy to let investor due to its fantastic position. Handforth offers a wide range of amenities, which include a number of local shopping facilities, restaurants and Handforth train station offering a direct service to Manchester City centre the location caters for many different needs. Within a 10 minute drive away there are many additional amenities such as fitness centres, golf courses, Marks and Spencer and John Lewis. In brief the internal accommodation comprises of an entrance hallway which provides access to the fitted kitchen with integrated appliances, two good size bedrooms one with fitted wardrobes, as well as the three piece bathroom suite and good size living space. To the outside there is off road parking to the front and communal lawned gardens to the rear. Must view!

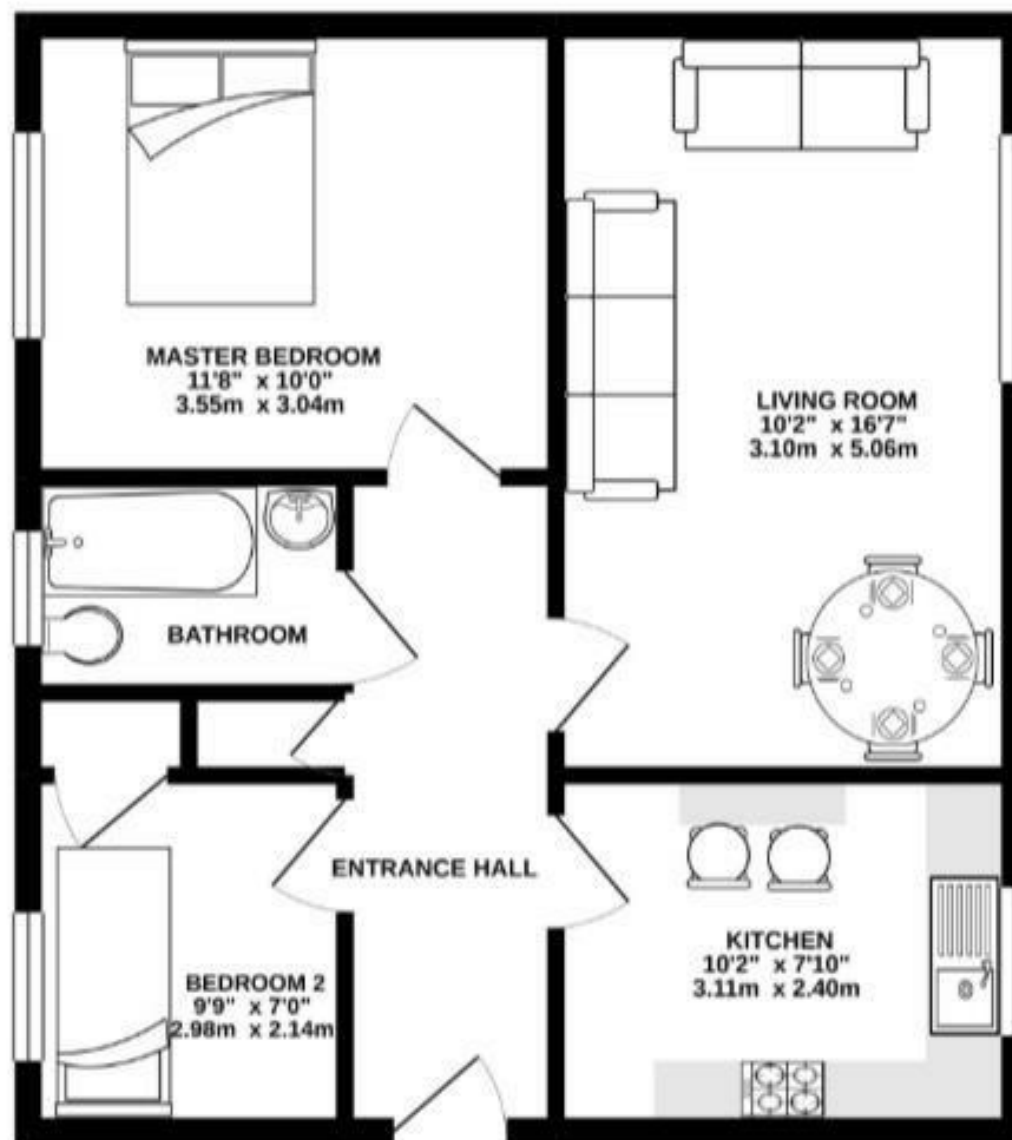




- Apartment
- Ground floor
- Central Handforth Location
- Close Proximity To Handforth Train Station
- Two Bedrooms
- Residents Parking
- Communal Grounds



| Energy Efficiency Rating | | |
|---|---|-----------|
| | Current | Potential |
| Very energy efficient - lower running costs | | |
| (92 plus) A | | |
| (81-91) B | | |
| (69-80) C | | 72 |
| (55-68) D | 66 | |
| (39-54) E | | |
| (21-38) F | | |
| (1-20) G | | |
| Not energy efficient - higher running costs | | |
| England & Wales | EU Directive 2002/91/EC  | |



These particulars are believed to be accurate but they are not guaranteed and do not form a contract. Neither Jordan Fishwick nor the vendor or lessor accept any responsibility in respect of these particulars, which are not intended to be statements or representations of fact and any intending purchaser or lessee must satisfy himself by inspection or otherwise as to the correctness of each of the statements contained in these particulars. Any floorplans on this brochure are for illustrative purposes only and are not necessarily to scale.

Offices at: Chorlton, Didsbury, Disley, Hale, Glossop, Macclesfield, Manchester Deansgate, Manchester Whitworth Street, New Mills, Sale, Wilmslow and Withington

36-38 Alderley Road, Wilmslow SK91JX

01625 532000

wilmslow@jordanfishwick.co.uk

www.jordanfishwick.co.uk